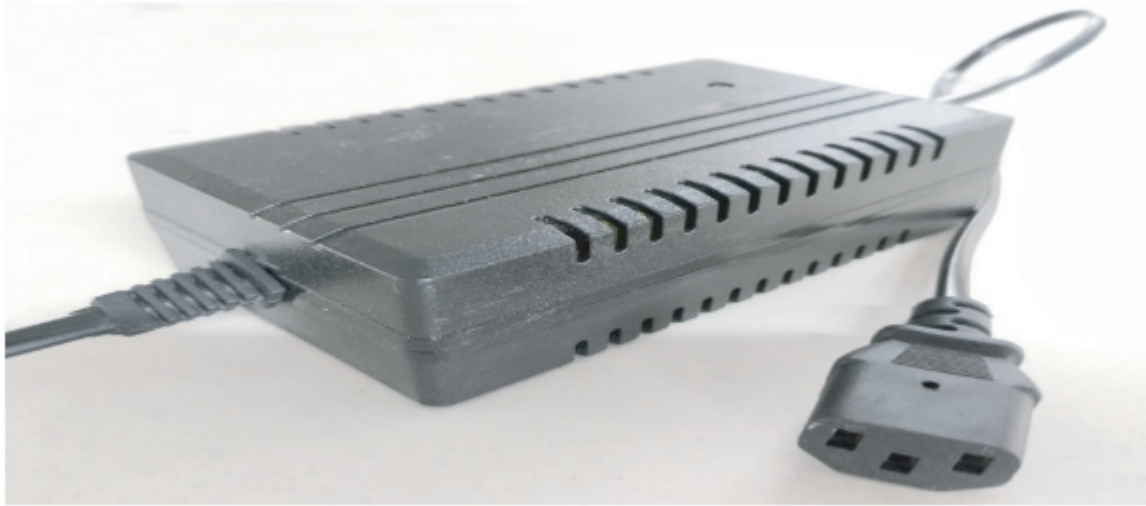


DATA SHEET - ETC30 14.6V-3A



FEATURES

- It can charge Deep Discharge Battery. Auto Cut-Off when battery is fully charged.
- Operates in CV/CC mode. Charges Battery @3A continuous current.
- Battery charging and full indication through dual colour LED.
- Added input surge protection up to 3KV for more reliability.
- Protection against Short Circuit, Input Under Voltage Protection, Input Over Voltage Protection, Overload Protection and Over Temperature Protection.

SPECIFICATIONS

	MODEL	ETC30 14.5V/3A
OUTPUT	OUTPUT VOLTAGE	14.5VDC
	OUTPUT NOMINAL VOLTAGE	12.8 VDC
	OUTPUT CURRENT	3A
	OUTPUT POWER	<500mV. Pk-Pk , at Nominal Input
	RIPPLE	Upto 29W
	RATED POWER	Upto 87%
	EFFICIENCY (typ.)	Upto 30 Ah
	RECOMMENDED BATTERY CAPACITY (AMP HOURS)	150 ~ 270 VAC
INPUT	INPUT VOLTAGE RANGE	47 ~ 63Hz
	FREQUENCY RANGE	0.22A/150VAC ~ 0.12A/270VAC
	AC CURRENT (typ.)	<3.5mA / 240VAC
	LEAKAGE CURRENT	Protection type : Shut down output voltage
PROTECTION	SHORT CIRCUIT	AVAILABLE
	OUTPUT OVER VOLTAGE	3KV
	SURGE	YES
	OUTPUT OVER LOAD	2-Pin AC Plug with 2 core cable.
ELECTRICAL WIRE	AC INPUT CONNECTION	2-Core cable ,1.5 meter length, with DC Plug
	DC OUTPUT	1 Red LED
	BATTERY FULL INDICATION	1 Green LED
INDICATION	CHARGING ON	120*70*38(L*W*H)
	CHARGE COMPLETE, CHARGER ON	BLACK
OTHERS	DIMENSIONS	110*60*270(L*W*H)
	COLOUR	BLACK