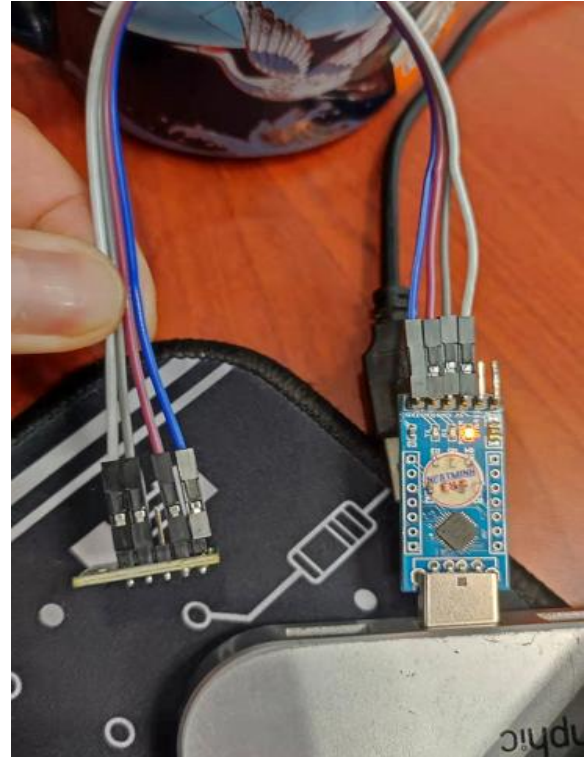
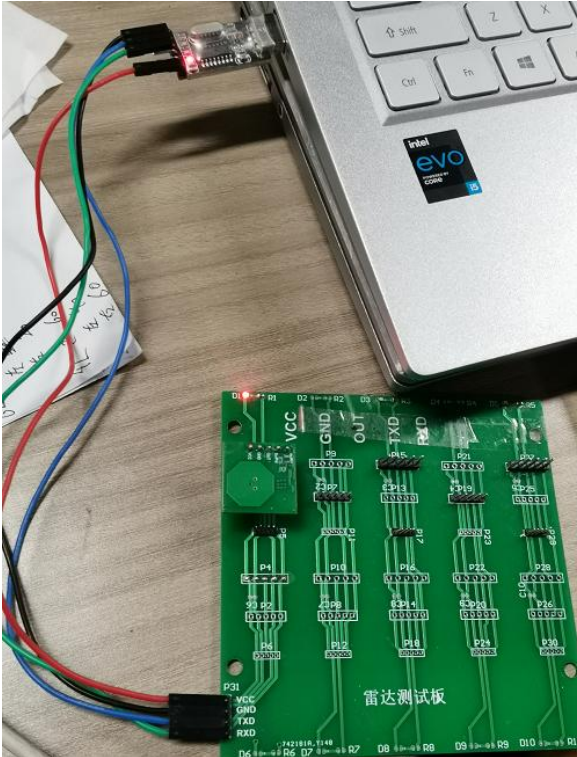
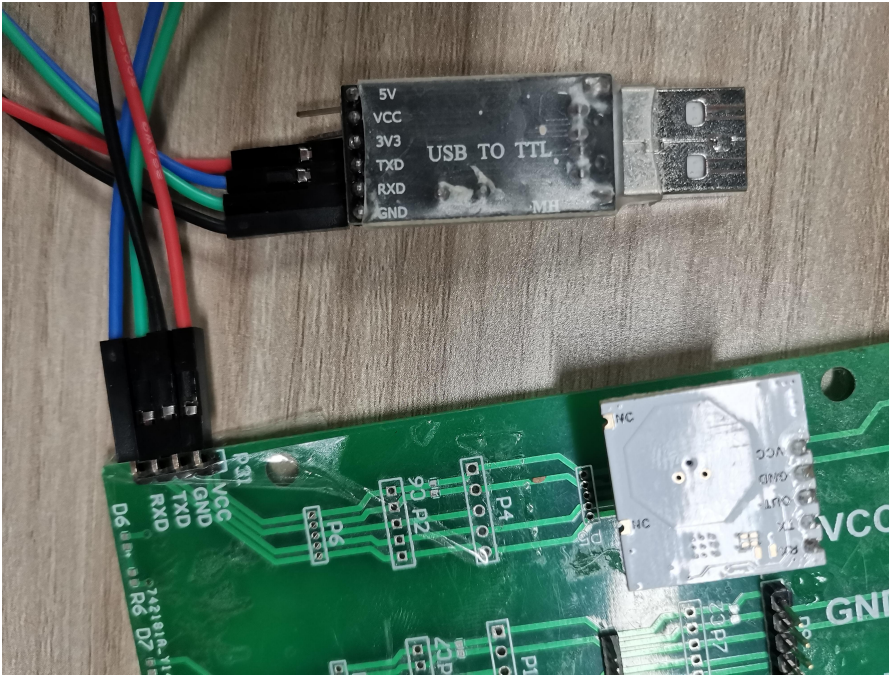
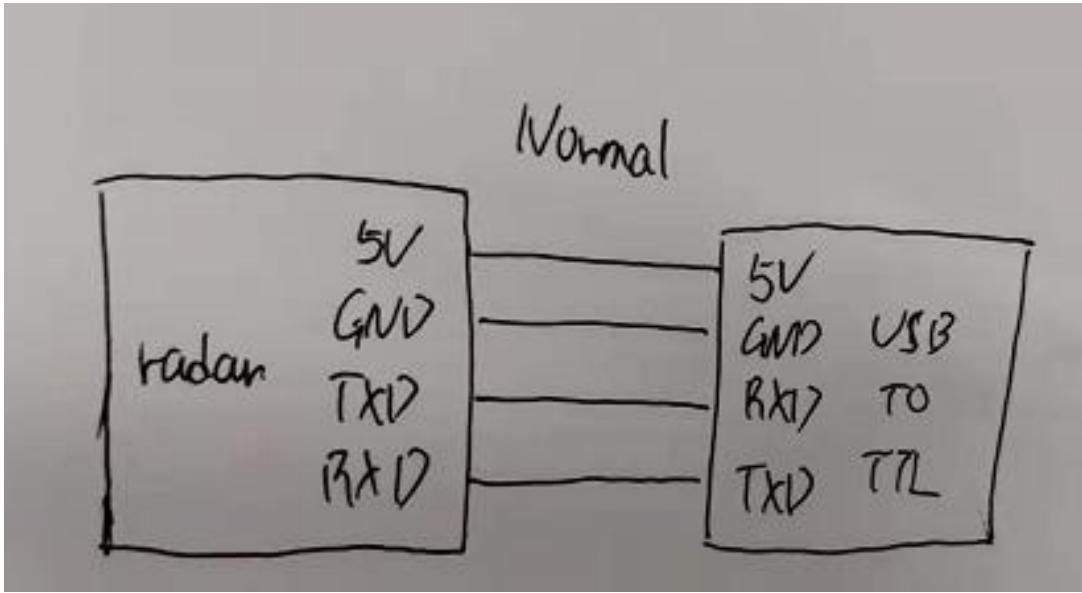


1 Connect the Module with Serial Port and Computer

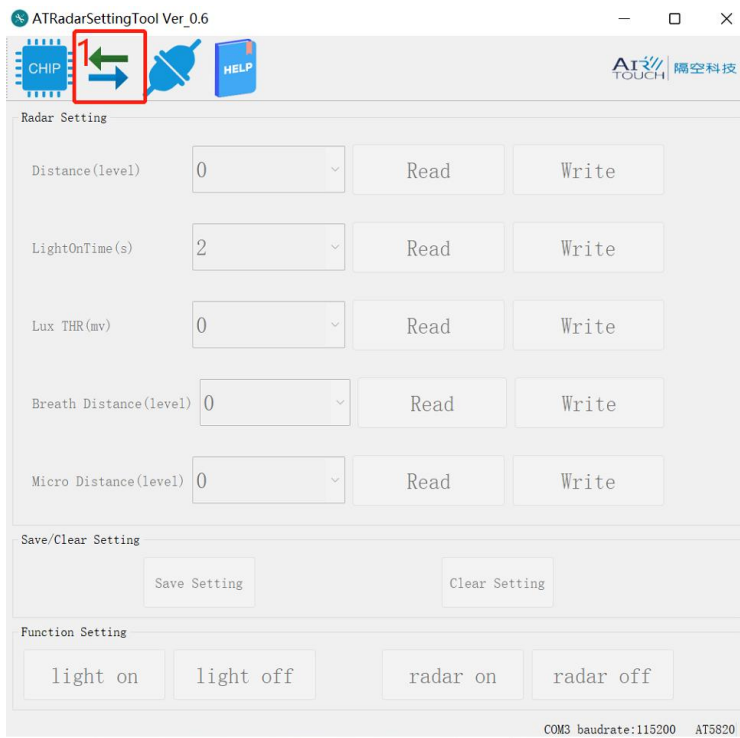




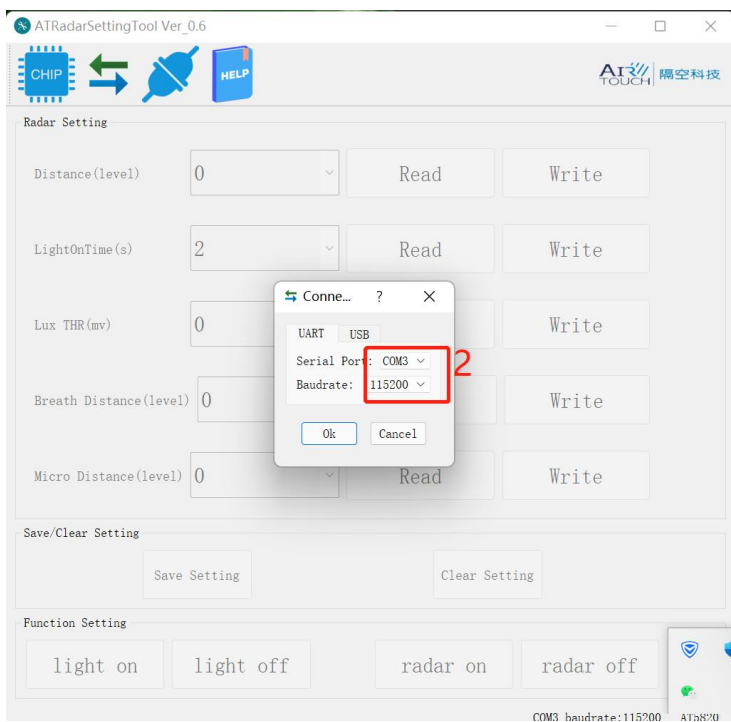
2 Using the Setting Tool

api-ms-win-crt-heap-l1-1-0.dll	2021/8/27 10:56	应用程序扩展	13 KB
api-ms-win-crt-locale-l1-1-0.dll	2021/8/27 10:56	应用程序扩展	12 KB
api-ms-win-crt-math-l1-1-0.dll	2021/8/27 10:56	应用程序扩展	21 KB
api-ms-win-crt-process-l1-1-0.dll	2021/8/27 10:56	应用程序扩展	13 KB
api-ms-win-crt-runtime-l1-1-0.dll	2021/8/27 10:56	应用程序扩展	16 KB
api-ms-win-crt-stdio-l1-1-0.dll	2021/8/27 10:56	应用程序扩展	18 KB
api-ms-win-crt-string-l1-1-0.dll	2021/8/27 10:56	应用程序扩展	18 KB
api-ms-win-crt-time-l1-1-0.dll	2021/8/27 10:56	应用程序扩展	14 KB
api-ms-win-crt-utility-l1-1-0.dll	2021/8/27 10:56	应用程序扩展	12 KB
ATRadarSettingTool	2021/8/27 11:21	应用程序	3,050 KB
ATRadarSettingTool.exe.manifest	2021/8/27 11:21	MANIFEST 文件	2 KB
base_library	2021/8/27 11:20	360压缩 ZIP 文件	761 KB
libffi-7.dll	2021/8/27 10:56	应用程序扩展	33 KB
MSVCP140.dll	2021/8/27 10:56	应用程序扩展	577 KB

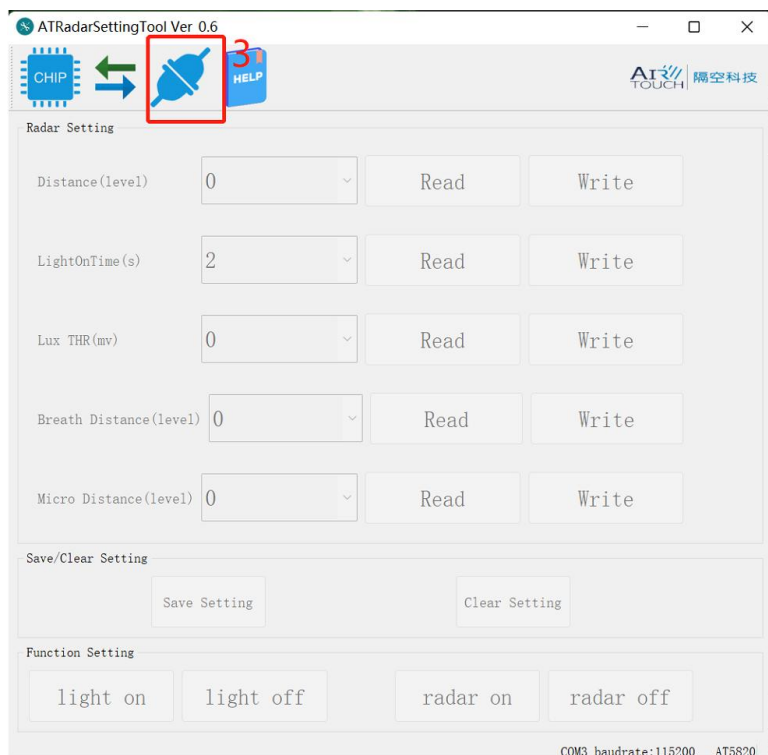
Step 1: Click "1"



Step 2: Choose the right COM you used



Step 3: Click“3”



3 Note:

More Larger Distance Level , More Smaller Sensing Distance