

SONOFF

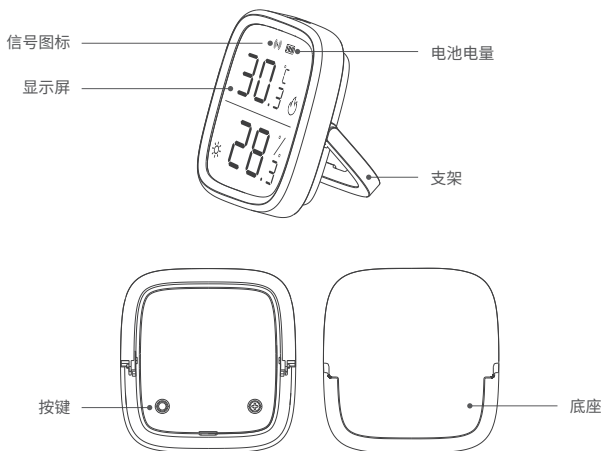
SNZB-02D

User manual V1.0



Zigbee LCD Smart Temperature Humidity Sensor

产品介绍



功能特点

一款带LCD屏，兼具设备端查看实时温湿度及APP监控的智能温湿度传感器。超高精确度获取最准确的温湿度数据，支持°C和°F单位切换、历史数据存储及导出，还有远程告警通知、语音询问、场景联动实现你的家庭自动化。



高精度



APP监控



°C / °F单位切换



数据存储&导出



告警通知



语音询问

配对至SONOFF Zigbee网关

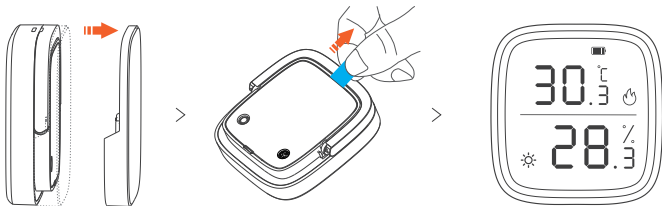
1. 下载易微联App

请前往应用商店、Google Play Store或Apple App Store搜索"易微联"进行下载。



2. 设备通电

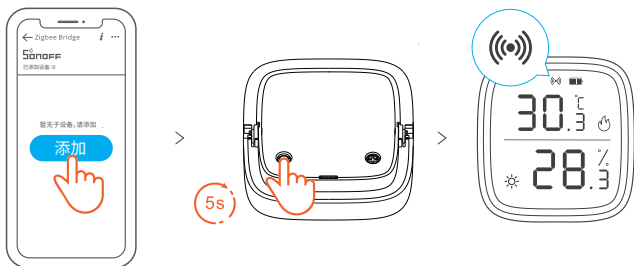
拔出电池绝缘片完成设备通电。



ⓘ 如设备为不带电池版本, 请安装电池 (CR2450) 给设备通电。

3. 添加 SONOFF Zigbee网关

4. 将设备添加至Zigbee网关



在eWeLink App Zigbee网关主界面, 点击 "添加" 子设备, 然后长按设备按钮5秒直至设备 Zigbee信号图标 (📶) 呈闪烁状态, 此时设备进入Zigbee设备配对状态, 等待添加。

- ⓘ 设备配对时效为30秒, 添加成功后Zigbee信号图标 (📶) 为常亮状态。如添加失败, 请将设备移近网关后再重新添加。

有效距离验证

在选定的设备安装位置, 短按设备的配对按键, 设备屏幕上的信号图标 (📶) 保持常亮, 表明该设备和Zigbee网络下的设备 (路由设备或网关) 处于有效通讯距离。

产品参数

产品型号	SNZB-02D
供电	3V纽扣电池 x1
电池型号	CR2450
无线连接	Zigbee 3.0
工作温度	-5°C~40°C
工作湿度	5%-95% RH, 无冷凝
LCD屏幕规格	2.8"
外壳材料	PC+LCD
产品规格	59.5x62.5x18.5mm

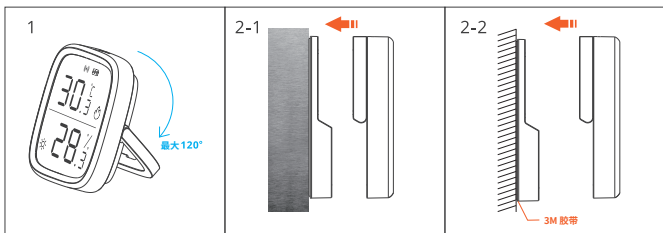
按键动作说明

动作	说明
双击	温度单位切换°C/°F (出厂默认为°C)
长按5秒	恢复出厂设置, 重新进入Zigbee配网状态

默认舒适度

干燥	湿度 \leq 40%RH
潮湿	湿度 \geq 60%RH
寒冷	温度 \leq 19°C/66.2°F
炎热	温度 \geq 27°C/80.6°F

设备安装



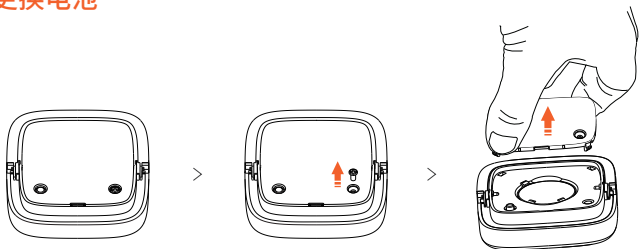
1. 桌面摆放

2. 配合底座安装

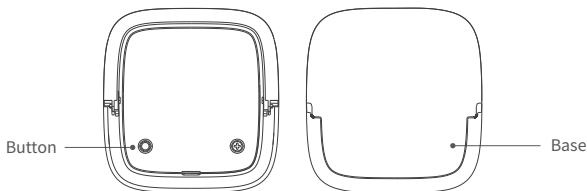
2-1. 底座磁吸到金属表面

2-2. 底座3M胶粘贴墙体

更换电池



Introduction



Features

SNZB-02D is a smart temperature and humidity sensor with LCD screen, allows you to see the real-time temperature and humidity on the screen and monitor the living conditions on the App, provides accurate measurements with ultra-high precision, ability to switch between °C and °F, store and export historical data, get alerts and notifications, voice commands, and set smart scenes to realize your home automation.



High Accuracy



APP Monitoring



°C/°F Reading Switch



Data Store & Export



Alert & Notification



Voice Command

Pair to SONOFF Zigbee Gateway

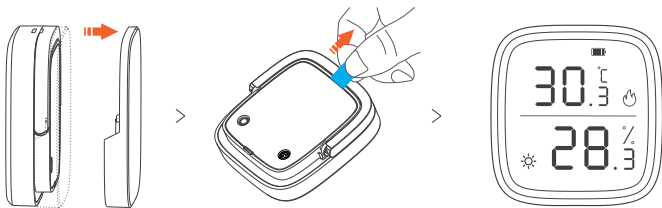
1. Download the eWeLink App

Please download the "eWeLink" App in Google Play Store or Apple App Store.



2. Power on

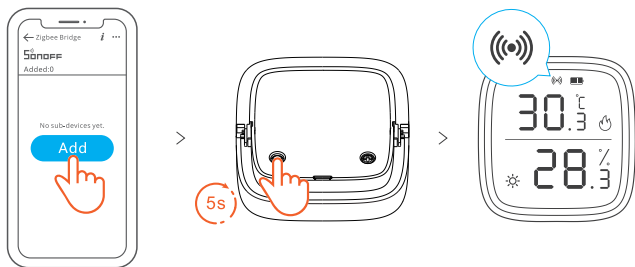
Pull out the battery insulation sheet to power the device on.



ⓘ If the device is the No battery version, please install the battery (CR2450) to power the device on.

3. Pair SONOFF Zigbee gateway to your eWeLink account

4. Add the device to Zigbee Bridge



Tap "Add" on the main page of Zigbee Bridge on your eWeLink App, and long press the button on the device for 5s until the Zigbee signal icon (📶) flashes, now the device is entered the pairing mode and waiting to be added.

- ⚠ The pairing time is 30s, when the device is added successfully, the Zigbee signal icon (📶) will keep on. If the device is failed to be added, please move the device closer to the Bridge and add it again.

Effective Communication Distance Verification

Place the device in your desired place and press the device's pairing button, then the signal indicator (📶) on the screen keeps on, which means the device and the device (router device or gateway) under the same Zigbee network is in the effective communication distance.

Specifications

Model	SNZB-02D
Power supply	3V button cell x 1
Battery model	CR2450
Wireless connection	Zigbee 3.0
Working temperature	-9.9°C~60°C
Working humidity	5%-95% RH, non-condensing
LCD dimension	2.8"
Casing material	PC+LCD
Product dimension	59.5x62.5x18.5mm

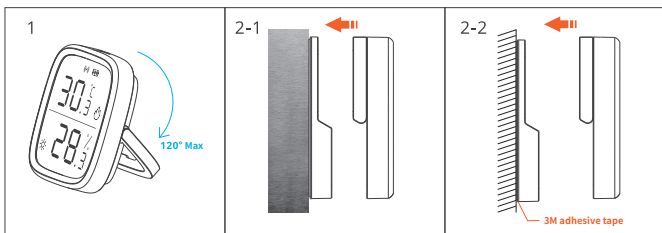
Button action description

Action	Description
Double-press	Switch unit readings (factory default is °C)
Long-press for 5s	Restore factory settings and enter Zigbee network pairing mode again

Default comfort level

Dry	Humidity \leq 40%RH
Wet	Humidity \geq 60%RH
Cold	Temperature \leq 19°C/66.2°F
Hot	Temperature \geq 27°C/80.6°F

Installation



1. Place on the desktop

2. Install with base

2-1. Attach to the metal surface with the magnetic base

2-2. Stick on the wall with 3M adhesive base

Battery replacement





“Do not ingest battery, Chemical Burn Hazard.”

This product contains a coin / button cell battery. If the coin / button cell battery is swallowed, it can cause severe internal burns in just 2 hours and can lead to death.

Keep new and used batteries away from children. If the battery compartment does not close securely, stop using the product and keep it away from children.

If you think batteries might have been swallowed or placed inside any part of the body, seek immediate medical attention.

FCC Warning

Changes or modifications not expressly approved by the party responsible for compliance could avoid the user's authority to operate the equipment.

This device complies with part 15 of the FCC Rules. Operation is subject to the following two conditions: (1) This device may not cause harmful interference, and (2) this device must accept any interference received, including interference that may cause undesired operation.

FCC Radiation Exposure Statement:

This equipment complies with FCC radiation exposure limits set forth for an uncontrolled environment. This transmitter must not be co-located or operating in conjunction with any other antenna or transmitter.

Note:

This equipment has been tested and found to comply with the limits for a Class B digital device, pursuant to part 15 of the FCC Rules. These limits are designed to provide reasonable protection against harmful interference in a residential installation. This equipment generates, uses and can radiate radio frequency energy and, if not installed and used in accordance with the instructions, may cause harmful interference to radio communications. However, there is no guarantee that interference will not occur in a particular installation. If this equipment does cause harmful interference to radio or television reception, which can be determined by turning the equipment off and on, the user is encouraged to try to correct the interference by one or more of the following measures:

- Reorient or relocate the receiving antenna.
- Increase the separation between the equipment and receiver.
- Connect the equipment into an outlet on a circuit different from that to which the receiver is connected.
- Consult the dealer or an experienced radio/TV technician for help.

IC Warning

This device complies with Innovation, Science and Economic Development Canada licence-exempt RSS standard (s). Operation is subject to the following two conditions: (1) this device may not cause interference, and (2) this device must accept any interference, including interference that may cause undesired operation of the device.

Le onjunc areil est conforme aux CNR d' l'innovation, la science et le développement économique Canada licables aux areils radio exempts de licence.

L'exploitation est autorisée aux deux conditions suivantes:

(1) l'areil ne doit pas produire de brouillage, et

(2) l'utilisateur de l'appareil doit accepter tout brouillage radioélectrique subi, onj si le brouillage est susceptible d'en compromettre le fonctionnement.

Any changes or modifications not expressly approved by the party responsible for compliance could void the user's authority to operate the equipment.

Tous les changements ou modifications non expressément approuvée par le responsable de la conformité pourrait vider l'utilisateur est habilité à exploiter l'équipemen.

ISED Radiation Exposure Statement:

This equipment complies with ISED RF radiation exposure limits set forth for an uncontrolled environment.

This transmitter must not be co-located or operating in conjunction with any other antenna or transmitter.

Cet appareil est

conforme aux limites d'exposition de rayonnement RF ISED établies pour un environnement non contrôlé.

Cet émetteur ne doit pas être co-implanté ou fonctionner en onjuction avec toute autre antenne ou transmetteur.

Hereby, Shenzhen Sonoff Technologies Co., Ltd. declares that the radio equipment type SNZB-02D is in compliance with Directive 2014/53/EU. The full text of the EU declaration of conformity is available at the following internet address:

<https://sonoff.tech/usermanuals>

Operation frequency Range: 2405-2480MHz(Zigbee), 2402-2480MHz(BLE)

RF Output Power: 5dBm(Zigbee), 5.5dBm(BLE)

The logo for Sonoff, featuring a stylized 'S' with three curved lines above it representing signal waves, followed by the word 'SONOFF' in a bold, blocky, sans-serif font.

Shenzhen Sonoff Technologies Co., Ltd.

3F & 6F, Bldg A, No. 663, Bulong Rd, Shenzhen, Guangdong, China

ZIP code: 518000

Website: sonoff.tech

MADE IN CHINA

