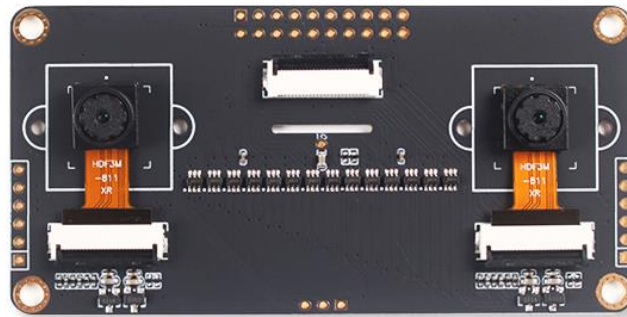


Sipeed DualCamera Datasheet

v1.0



Key Features:

- Camera: Dual OV2640(2.0 Megapixel)
- Binocular Distance: 60mm (Human eyes distance)
- Development Environment: Dual Camera API in MaixPy
- Low Latency Circuit Switching: 2.7Ω Low Voltage SPDT Analog
- Size : 88.2*43.8mm
- Connecting method: Three 24P FPC connector

UPDATE

V1.0	2019/7/10 Published original document

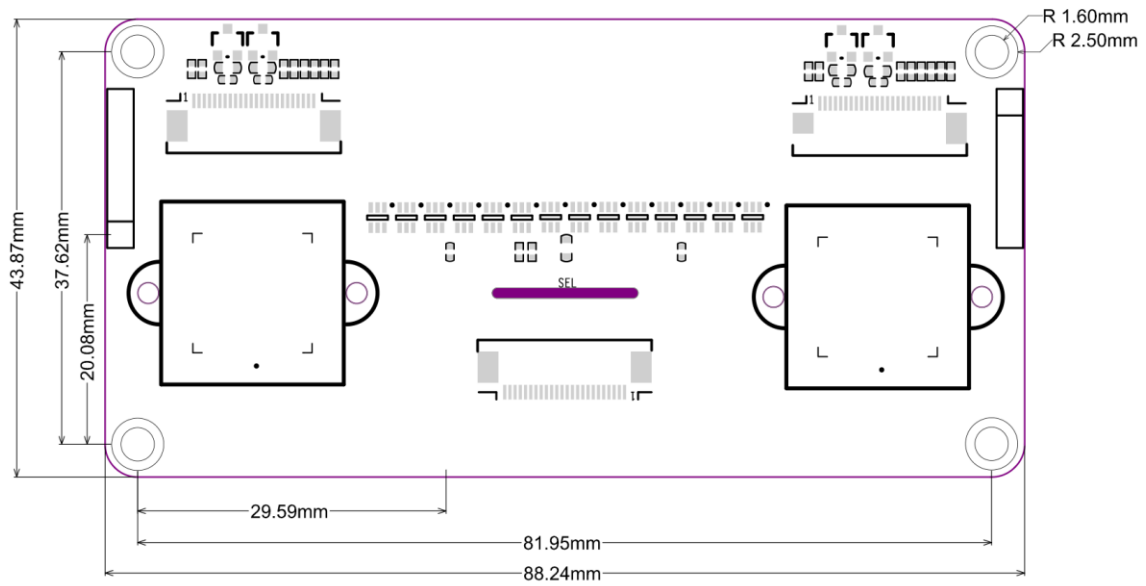
SPECIFICATION

CMOS : OV2640	Image : 1600x1200(UXGA) Format (8 bit): <ul style="list-style-type: none"> • YUV • RGB565/555 • 8bit compressed data • 8-/10-bit Raw RGB data
Function	Switch Camera controller is connected to DVP_PWDN
SPDT Analog Switch(BL1551)	Max Bandwidth: 300Mhz High Off-isolation : 84dB at 1Mhz 51dB at 10Mhz On-Resistance : 2.7Ω at 5.0V Latency: t _{on} 12.0ns; t _{off} 5.0ns TTL/CMOS compatible Break-Before-Make Switching Rail-to-Rail Signal Range

HARDWARE FEATURES

Supply voltage of external power supply	3.3V ±0.2V or 1.8V ±0.2V
Supply current of external power supply	>100mA
Temperature rise	<30K
Range of working temperature	0°C ~ 50°C

SIZE	
Length	88.2mm
Width	43.8mm



RESOURCES	
Official Website	www.sipeed.com
Github	https://github.com/Lichee-Pi
BBS	http://bbs.sipeed.com
Wiki	maixpy.sipeed.com
Sipeed Model Store	https://maixhub.com/
SDK Reference	dl.sipeed.com/MAIX/SDK
HDK Reference	dl.sipeed.com/MAIX/HDK
E-mail (Technical Support)	support@sipeed.com
Telegram Link	https://t.me/sipeed
QQ Group	878189804



Disclaimer and copyright notice

The information in this document, including the URL address for reference, is subject to change without notice.

The documentation is provided by Sipeed without warranty of any kind, including any warranties of merchantability, and any proposal, specification or sample referred to elsewhere. This document is not intended to be a liability, including the use of information in this document to infringe any patent rights.

Copyrights © 2019 Sipeed Limited. All rights reserved.