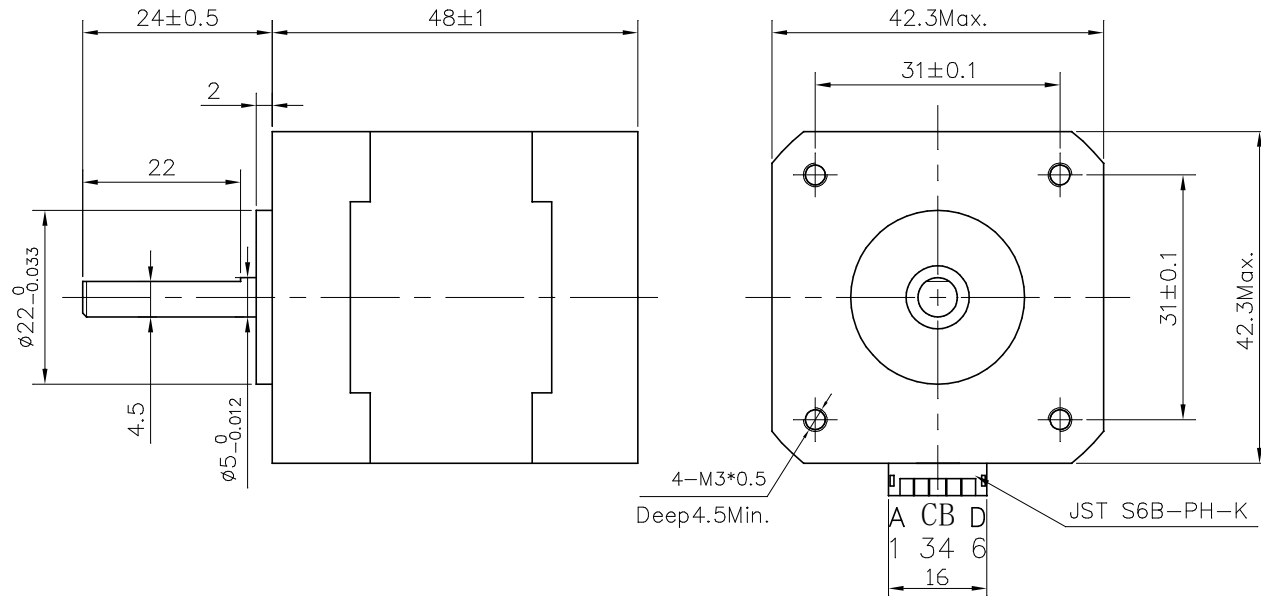
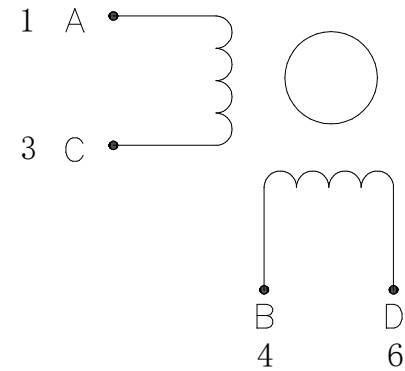


Dimension:
Unit=mm



Wiring Diagram:



Specifications:

相数 Phase	2		Comment
步距角 Step Angle	1.8	deg.	
电压 Voltage	4	V	
相电流 Current	2.5	A	
相电阻 Resistance	1.6±10%	Ω	
相电感 Inductance	1.8±20%	mH	
静力矩 Holding Torque	5	kg.cm	
绝缘等级 Insulation Class	B		
重量 Mass	0.34	kg	

REV.	QTY.	No.	SIG.	DATE	Title:		
					Specification		
					常州精控电机电器有限公司		
					JK42HS48-2504AF-01		
DESIGN	蔡金龙	18.7.11	STD.		CLS.MAK	WEIGHT	SCALE
CHECK							
PROC.			APPR.		PAGE:	OF	PAGES

www.jkongmotor.com