

64-Megapixel Autofocus Camera

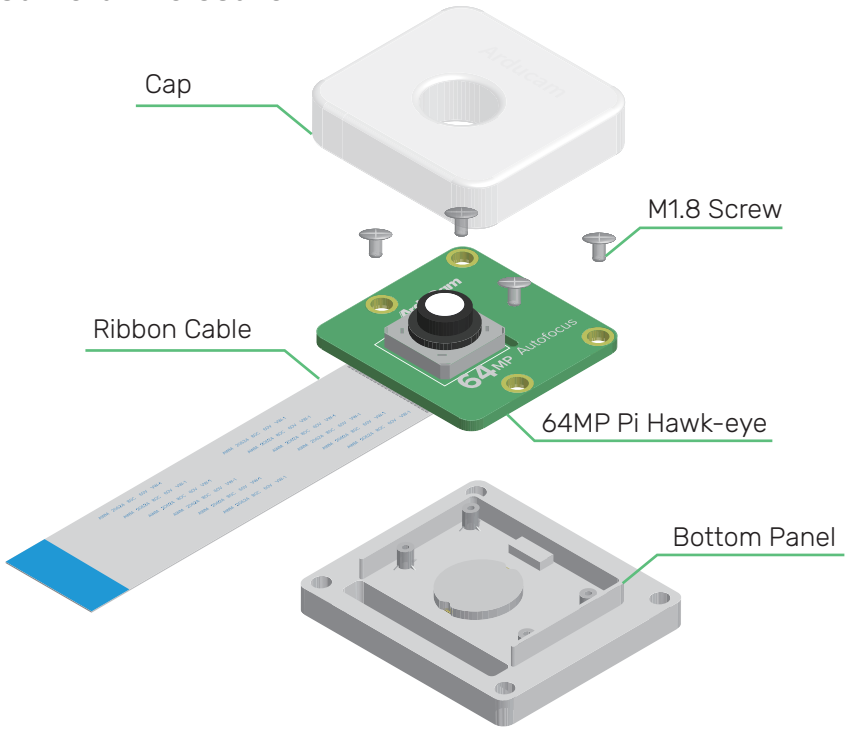
Getting Started

Operating instructions,
safety information, etc.

Published in April 2022
by ARDUCAM TECHNOLOGY CO., LIMITED

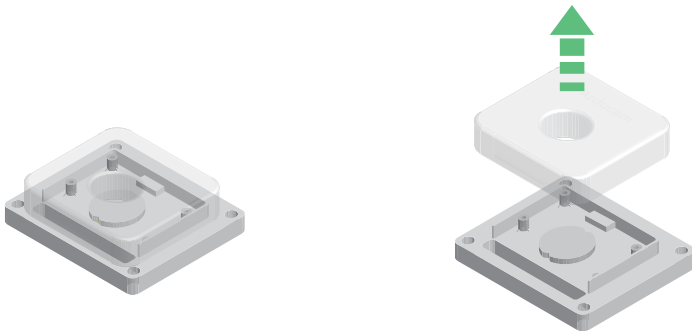
Installation

Camera Enclosure



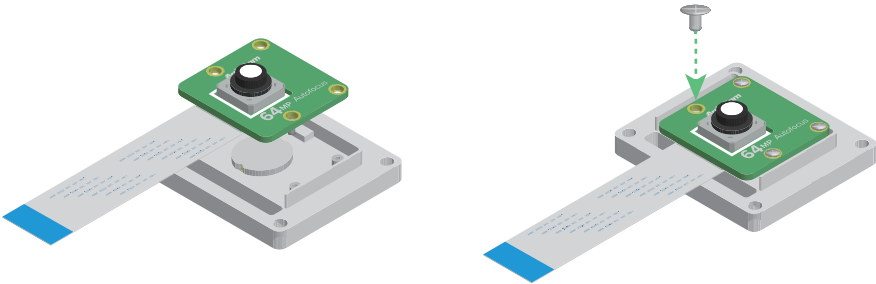
To fit a camera board (64MP Autofocus Camera for Raspberry Pi)

1. Pull the cap up.

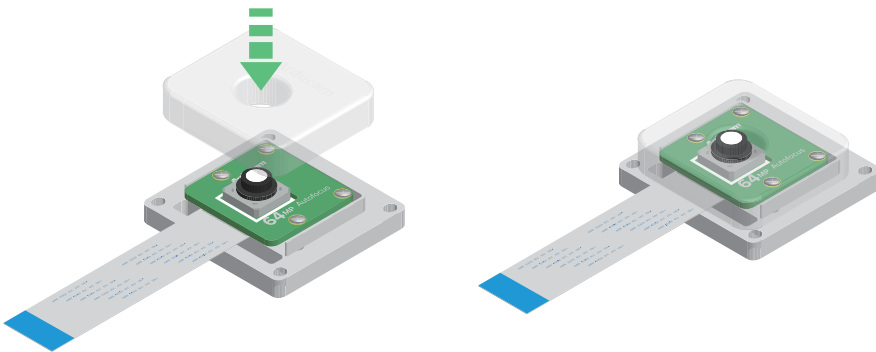


Installation

2. Put the module into the bottom panel and install the screws.

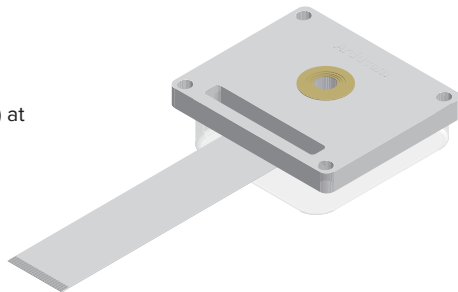


3. Put the cap back.



Tripod Mount

- ▶ There's a standard tripod mount (1/4"-20) at the back of the enclosure, you can use it with all sorts of tripods.



Operating The Camera

The camera requires a driver to be installed according to the platform in use, please see the following.

for Raspberry Pi

Quick start :

<https://docs.arducam.com/Raspberry-Pi-Camera/Native-camera/Quick-Start-Guide/#imx519hawkeye-64mp-cameras>

Autofocus :

<https://docs.arducam.com/Raspberry-Pi-Camera/Native-camera/Libcamera-User-Guide/#autofocusmanual-focus-function>

for Octopi

<https://docs.arducam.com/Raspberry-Pi-Camera/Native-camera/64MP-Hawkeye/#how-to-use-octopi-with-arducam-64mp-camera>

Instructions for Safe Use

To properly use the 64MP Autofocus Camera, kindly note:

- Before connecting, you should always power the Raspberry Pi off and remove the power supply first.
- Make sure the cable on the camera board is locked in place.
- Make sure the cable is correctly inserted in the Raspberry Pi board's MIPI CSI-2 connector.
- Avoid high temperatures.
- Avoid water, moisture, or conductive surfaces while in operation.
- Avoid folding, or straining the flex cable.
- Avoid cross-threading with tripods.
- Gently push/pull the connector to avoid damaging the printed circuit board.
- Avoid moving or handling the printed circuit board excessively while it's in operation.
- Handle by the edges to avoid damages from electrostatic discharge.
- Where the camera board is stored should be cool and as dry as possible.
- Sudden temperature/humidity changes can cause dampness in the lens and affect the image/video quality.

MIPI DSI and MIPI CSI are service marks of MIPI Alliance, Inc

Raspberry Pi and the Raspberry Pi logo are trademarks of the Raspberry Pi Foundation

Arducam High-Resolution Autofocus Camera And Arducam logo are trademarks of ARDUCAM TECHNOLOGY CO., LIMITED

Visit us at

www.arducam.com

