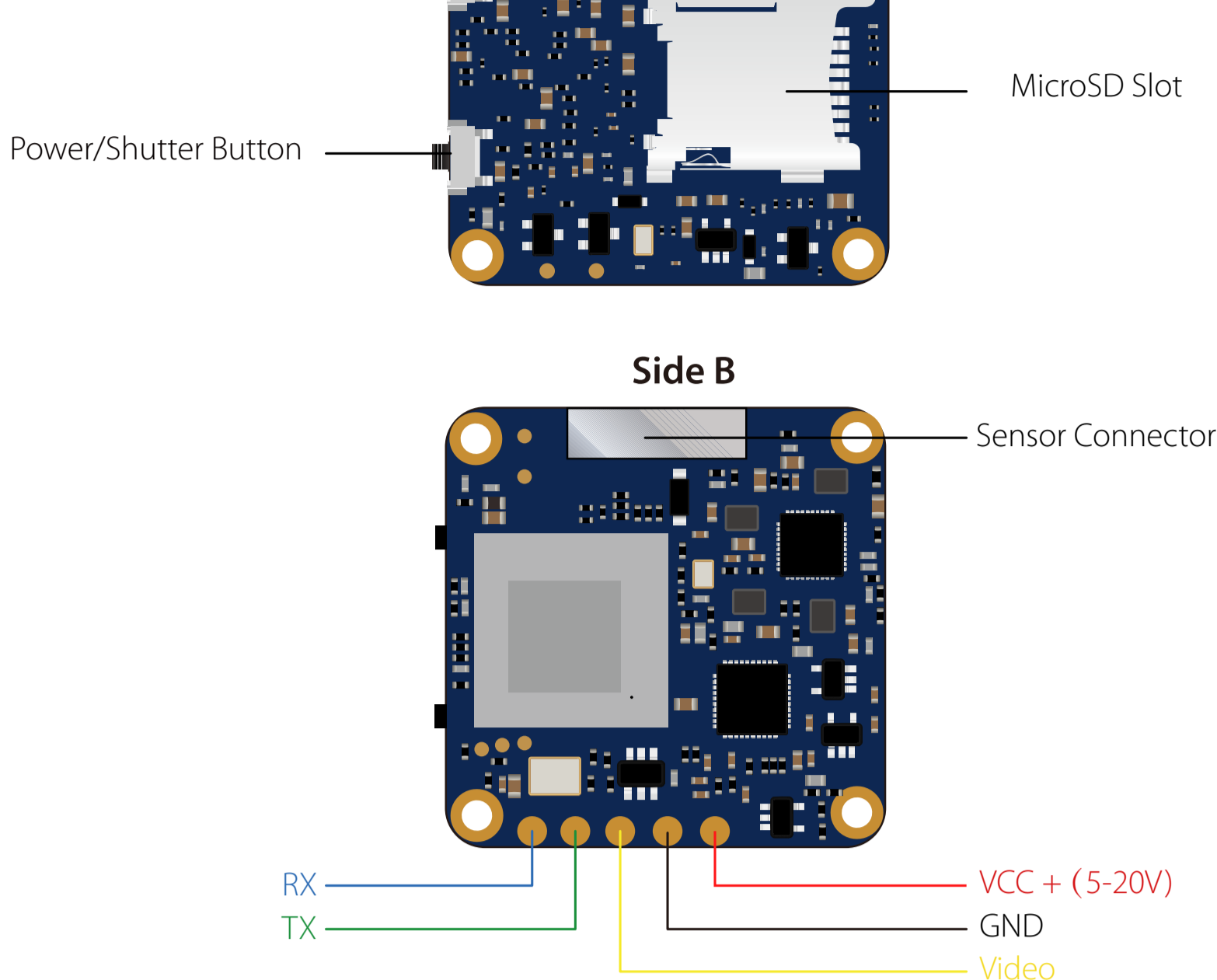


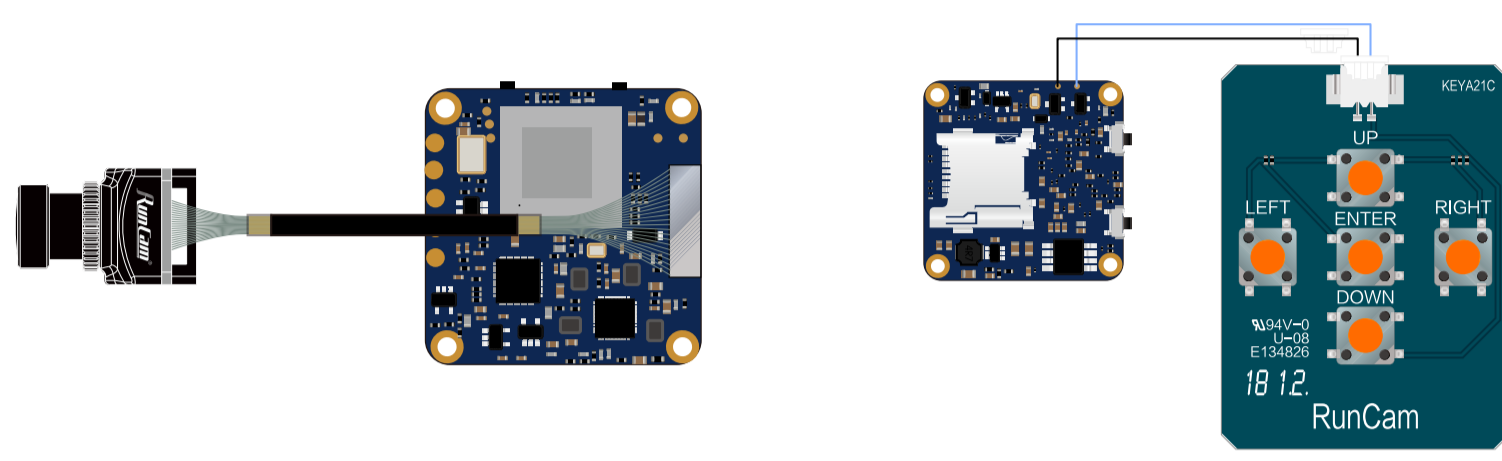
RunCam Split 4-25

User Manual

■ Instruction Diagram



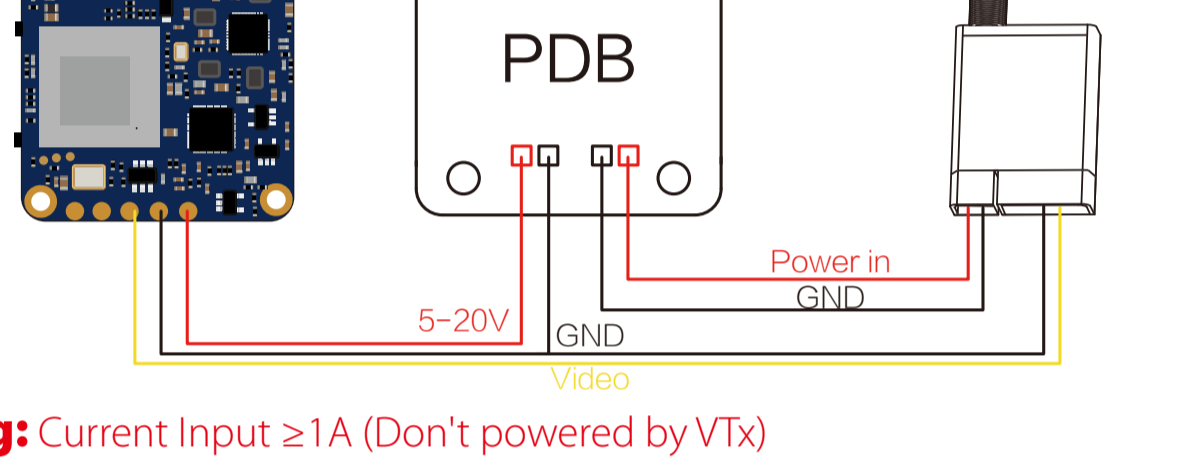
■ Lens Module Connection Diagram



■ Basic Camera Operation

Powering On/Off	Long press the Power/Shutter button
Standby Mode	Camera Status Light: Blue is On
Video Mode	Camera Status Light: Blue blinks Press the Power/Shutter button to start/stop recording.
Mode Switching	In Standby Mode, long press the Mode Switch button to cycle through the two modes: Video/OSD settings.
OSD Setup Mode	Camera Status Light: Orange is On • Press the Power/Shutter button to move to a setting. • Short press the Mode Switch button to change setting. • Long press the Mode Switch button to exit the menu.
Firmware Upgrading	Camera Status Light: Orange blinks https://www.runcam.com/download/runcamsplit3series
Reset	In standby mode, press the Mode Switch button three times in rapid succession (within 2 seconds). When resetting is complete, the status light (orange) blinks twice, and the camera automatically shuts down.

■ Transmitter Connection Diagram



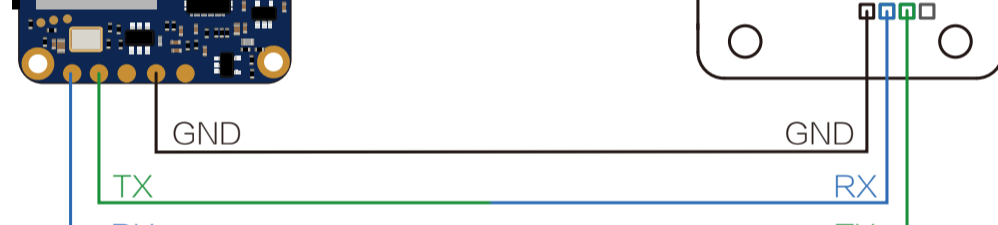
Warning: Current Input $\geq 1A$ (Don't powered by VTx)

■ Flight Controller Set

Preparation

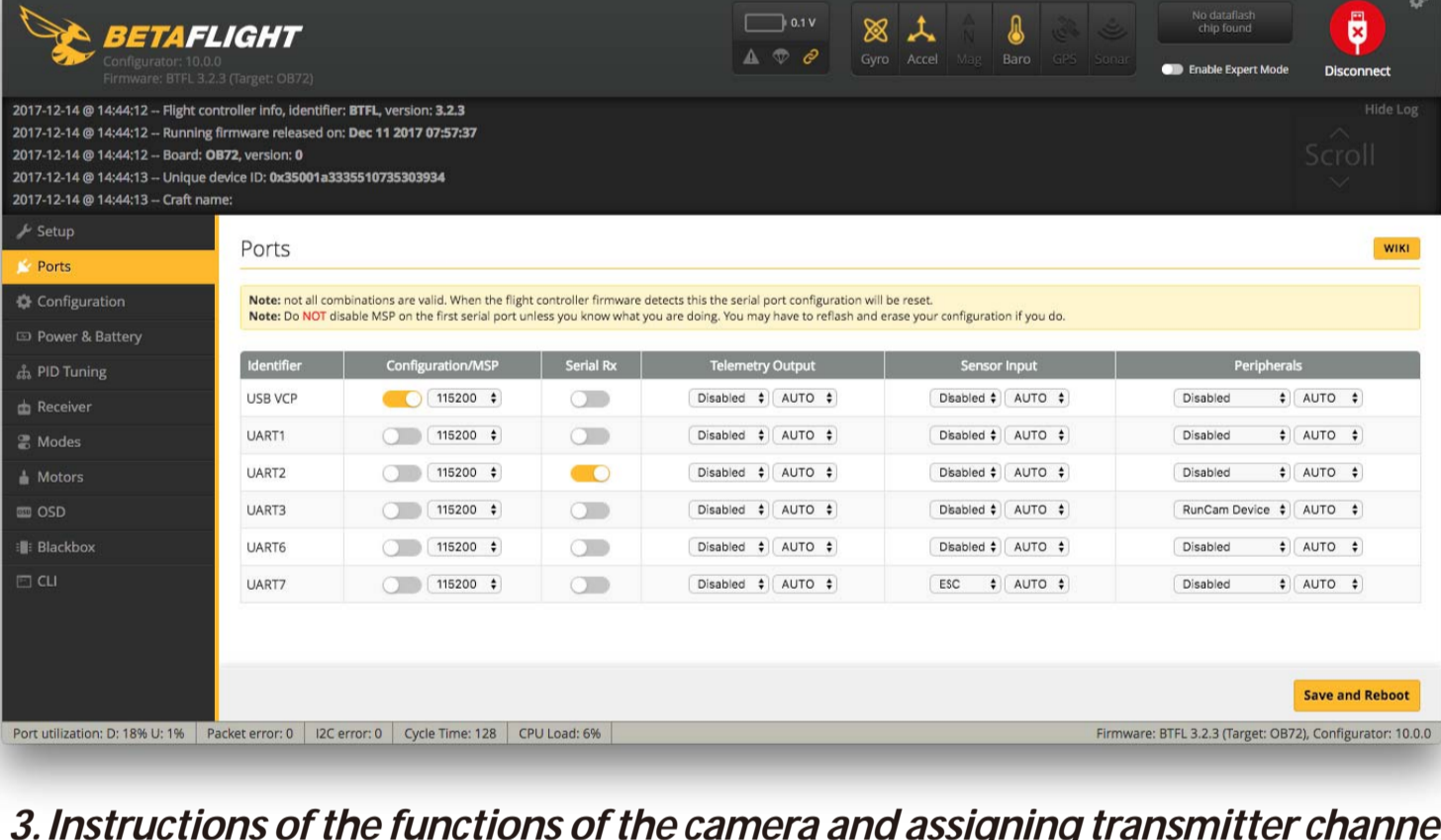
- Firmware: BetaFlight Firmware ($\geq 3.2.0$), CleanFlight Firmware ($\geq 2.1.0$), KISS Firmware (≥ 1.3 -RC30) or INAV Firmware ($\geq 1.7.3$).
- Any available UART interface on the Flight Controller

1. Connect the Split 4 with the UART interface of the Flight Controller



2. Make the Flight Controller recognize the Split 4

For example, we connect the Split 4 to the UART 3 interface on the Flight Controller: connect the Flight Controller to the computer, then open the configurator software of the Flight Controller. (Open up the configurator that matches the firmware you are running, Betaflight Configurator for Betaflight, Cleanflight Configurator for Cleanflight). In the Peripherals column of the line UART3 (on the Ports tab), select RunCam Device and click Save And Reboot.



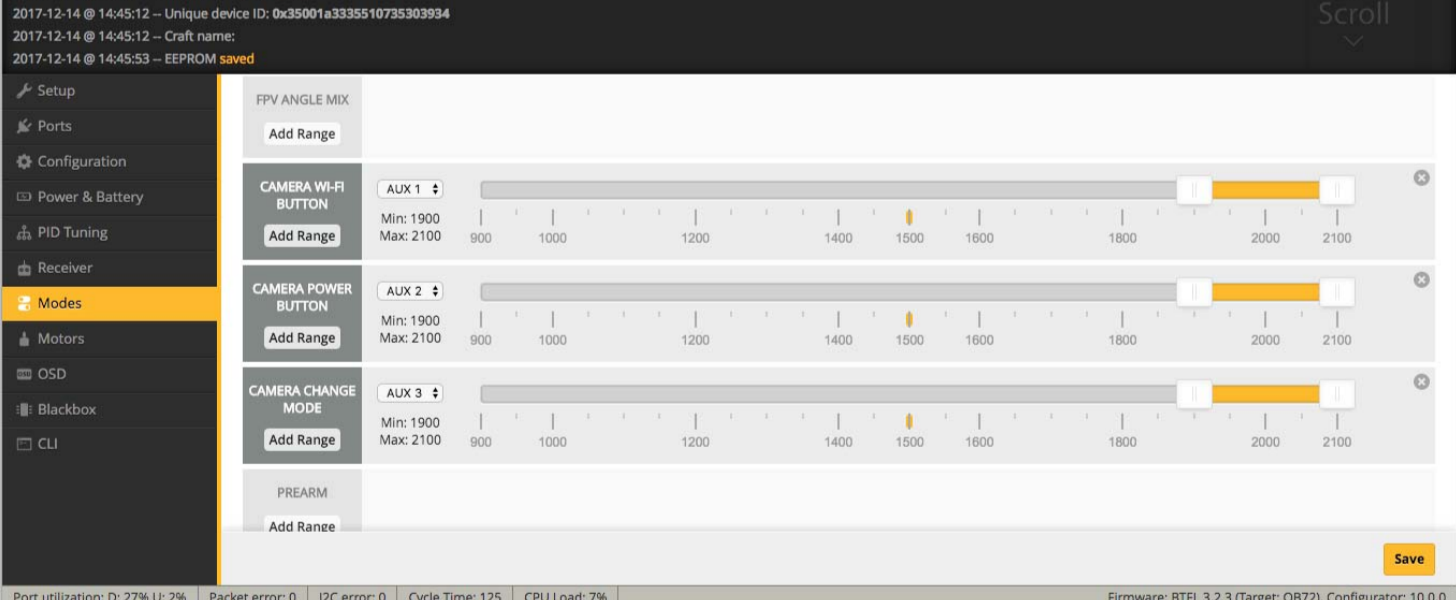
3. Instructions of the functions of the camera and assigning transmitter channels to them

In the Flight Controller Configurator, navigate to the Modes tab. There are new CAMERA WI-FI, CAMERA POWER and CAMERA CHANGE modes

- CAMERA POWER: start/stop the video. When in the OSD of the camera, this is used to move to the next menu item.
- CAMERA CHANGE MODE: switch among the two modes: video and OSD setting mode. When in the OSD of the camera, this will exit the menu

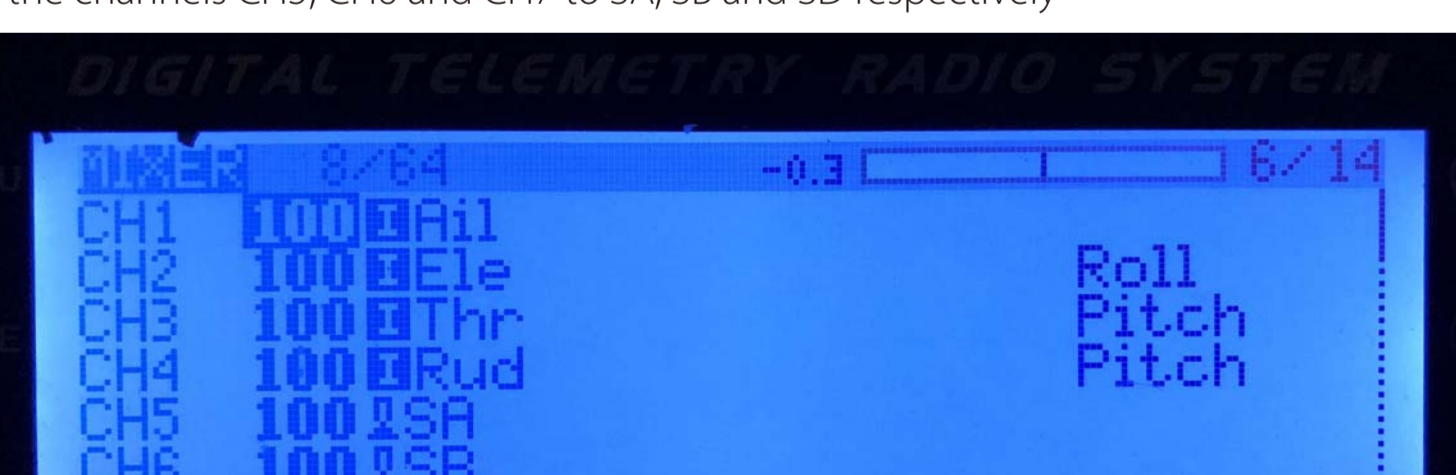
Assign any available channel to the function you need, for example:

- Assign the AUX2 to the CAMERA POWER, range 1900-2100
- Assign the AUX3 to the CAMERA CHANGE MODE, range 1900-2100



4. Assign the channel to the switch of the controller

Please choose your Model on the controller, then access to the MIXER interface and assign the channels CH5, CH6 and CH7 to the switch of the controller. Take openxtx 2.2.0 for example, assign the channels CH5, CH6 and CH7 to SA, SB and SD respectively



5. Test

Power the Flight Controller and the Split 4

- Set the SA to the bottom, the camera starts/stops the video
- Set the SD to the bottom, the camera switches among the two modes: video and OSD setting mode

■ Technical Support

Please visit: <https://support.runcam.com>

■ Parameter

Model	Split 4
Sensor	SONY 13MP
Field of View(FOV)	140°
Video Resolution	4K@30fps/2.7K@60fps/2.7K@50fps/1080P@60fps
Video File Format	MP4
TV Mode	NTSC (720*480)/PAL (720*576) Switchable
Interface	UART
Max Micro SD Card Supported	128G(Recommend U3)
Power Input	DC 5-20V (Non-direct power supply from battery, Powered directly with battery will generate surges and burn the camera.)
Lens Module Size	14*14mm
Mounting Hole Distance	25.5*25.5mm
PCB Size	29*29mm
Working Current	MAX 450mA @5V
Weight	10.2g