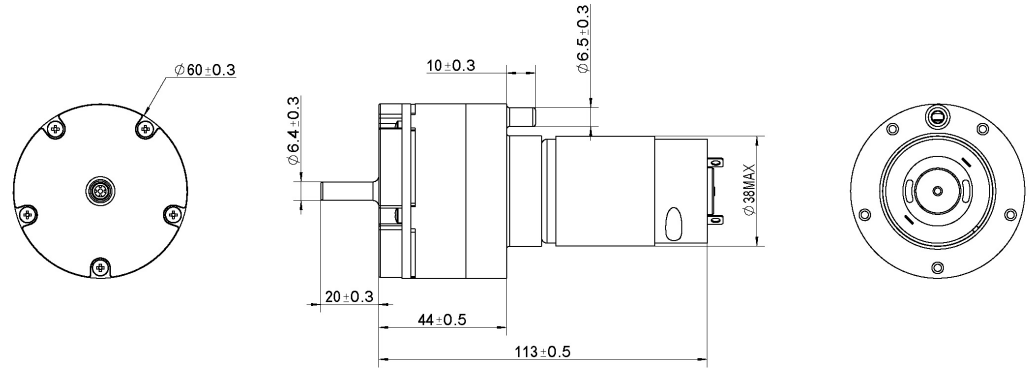
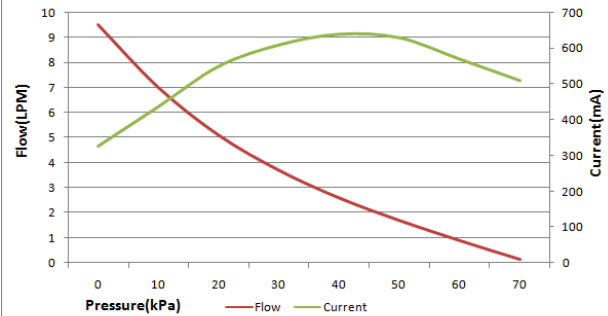


Pump

12V DC 8L/min



AJK-B12A3605 Flow(LPM) & Current(mA)



Product Specification

Rated Voltage	Rated Current	Free Flow	Pressure	Noise	Load
DC 12.0 V	< 900 mA	> 8.0 LPM	-40~70 KPa	< 63 dB	Air & Vacuum
DC 24.0 V	< 700 mA	> 8.0 LPM	-40~70 KPa	< 63 dB	Air & Vacuum