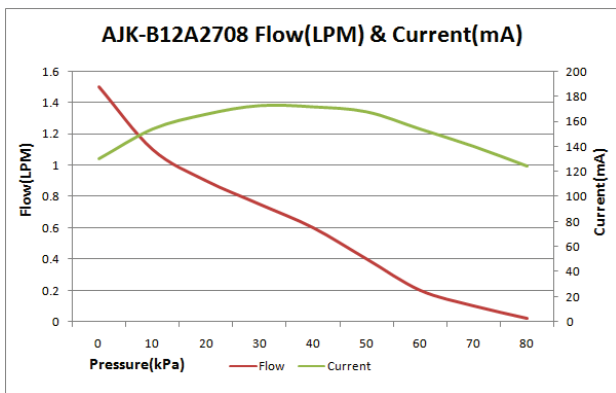
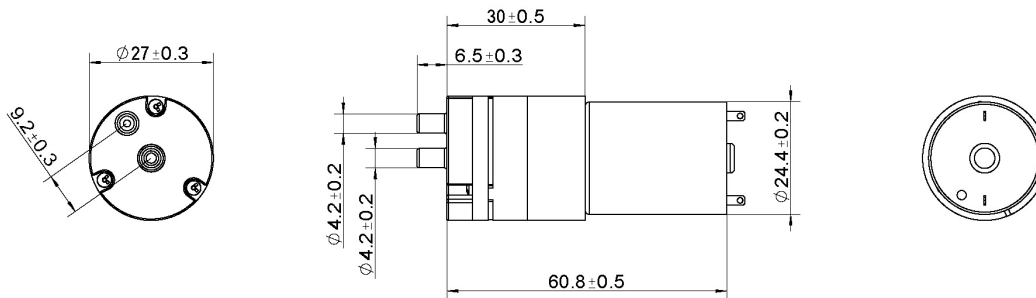
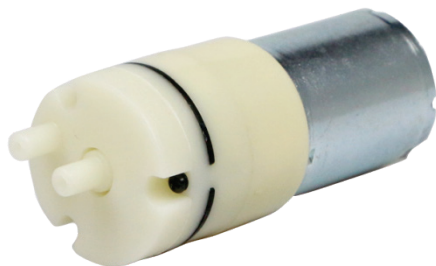


Pump

12V DC 1.2L/min



## Product Specification

Rated Voltage	Rated Current	Free Flow	Pressure	Noise	Load
DC 12.0 V	< 300 mA	> 1.0 LPM	-50~60 KPa	< 65 dB	Air & Vacuum
DC 12.0 V	< 700 mA	> 0.5 LPM	> 200 KPa	< 60 dB	Water
DC 24.0V	< 450 mA	> 0.5 LPM	> 200 KPa	< 60 dB	Water