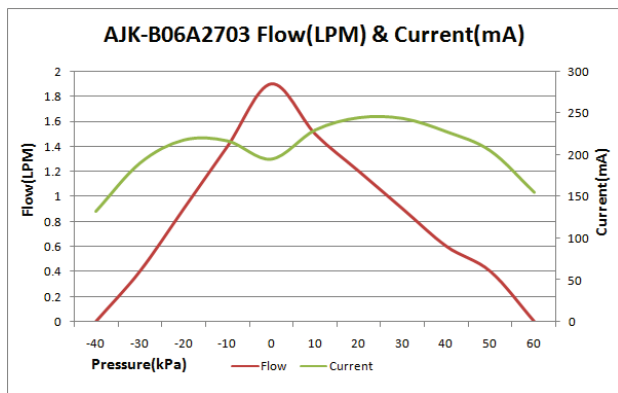
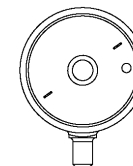
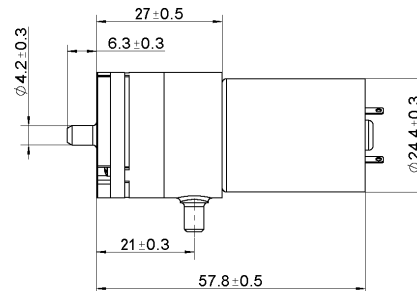
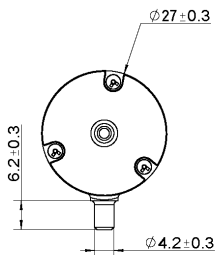
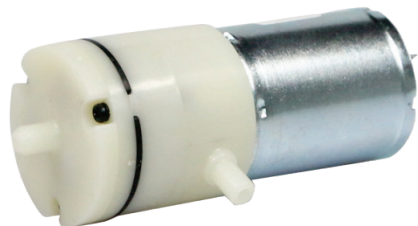


Pump

12V DC 2L/Min



Product Specification

Rated Voltage	Rated Current	Free Flow	Pressure	Noise	Load
DC 6.0 V	< 400 mA	> 1.8 LPM	-35~60 KPa	< 60 dB	Air & Vacuum
DC 12.0 V	< 250 mA	> 1.8 LPM	-35~60 KPa	< 60 dB	Air & Vacuum
DC 24.0 V	< 200 mA	> 1.8 LPM	-35~60 KPa	< 60 dB	Air & Vacuum