

SWITCH MODE POWER SUPPLY LE-A-12-025

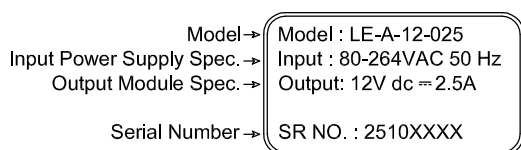
1 Warning

- ⚠ Always read this manual before using the Power module. It will be helpful in the installation, electronic specification, function specification and troubleshooting of the LE-A-12-025.
- ⚠ The Power module should be kept in an enclosure away from airborne dust, high humidity, electric shock risk and vibration.
- ⚠ Never connect the AC main circuit power supply to any of the output terminals, as it will damage the Power module. Check all the wiring prior to power up. To avoid any electromagnetic noise, make sure the module is properly grounded.

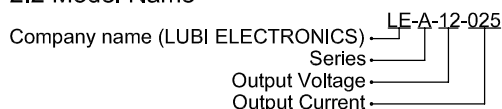
2 Introduction

LE-A-12-025 is a Power module that provides 12V dc and 2.5A current for output power.

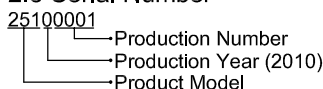
2.1 Label Explanation



2.2 Model Name



2.3 Serial Number



3 Functional/Electrical Specifications

Parameters	LE-A-24-025
AC input voltage and Frequency range	80V~264VAC / 50 Hz
AC inrush current	Cold start, <25A at 230VAC
Leakage current	<0.75 mA at 240V AC
DC adjustment range	10-13 V
DC Output voltage and current	12VDC, 0~2.5A
Output power	30W
Ripple and Noise	<100mV p-p at full load
Efficiency	≥85%
Load Regulation	+/- 1%
Line Regulation	+/-1%
Short Circuit Protection Type	Shut Down Output Voltage, Re-Power On to Recover.
Set Up , Rise and Hold up Time	300 ms , 50 ms and 90mS at Full load and Rated Condition
Withstand voltage	I/P-O/P:1.5 KVAC, I/P-FG:1.5KVAC, O/P-F/G:0.5KVAC
Working Temperature	-25 to +60 Deg C
Relative humidity	20-95% RH Nonconducting
Temperature Co-efficient	+/- 0.03% / Deg C
Connection	5pin connector

Important notes

- Environment
 1. **DO NOT** store the Power module in a dusty, smoky, or corrosive atmosphere.
 2. **DO NOT** store the Power module in an environment with high temperature or very high humidity.
 3. **DO NOT** install Power module on a shelf or on an unstable surface.
- Power Input Wiring

Power input of LE-A-12-025 is AC input. Connect the AC input (80VAC ~ 264VAC) to terminals L and N. Any AC110V or AC220V connected to the +12V terminal will permanently damage the Power module.

Troubleshooting

Error can be identified by the indicator on the front. When error occurs, please check ☼ "POWER" LED. The "POWER" LED at the front will be lit (in green) if the power is on. If the indicator is not on when the MPU is powered up, please check if AC input supply is normal. If the indicator is not on when the MPU is powered up and with the input power being normal, it is an indication that the Power module is malfunction. Please have this machine replaced or have it repaired.